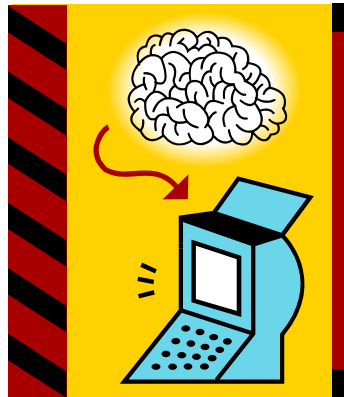


# Use Your Noodle with ... *NOODLEBIB*



Create a Boyden Library NoodleBib Account

## New England Champions (Photos, Video)

By Mr. Thiel | November 15, 2010

by Mr. Scandling

Junior Chris Miao scored twice in the last 35 seconds, netting the second goal with 4 seconds remaining, to lead Deerfield to the New England Championship on Saturday. For the third time in four years, Deerfield and Choate met in a thrilling final. Choate, which had upset Exeter in the other semifinal, started strongly and led 5-2 in the second quarter, but Deerfield



DA Boys Waterpolo Brings Home the Championship

### Select BOYDEN LIBRARY

#### DANET Contents

- [Academics](#)
- [Co-Curriculars](#)
- [Dining Hall](#)
- [Student Handbook](#)
- [Residential Life](#)
- [Groups & Clubs](#)
- [ITS Help Desk](#)
- [Campus Services](#)
- [Just for Parents](#)
- [Academy Calendar](#)

#### DANET Archives

Select Month

View the [DANET Sitemap](#).

MONDAY, NOVEMBER 15

[Future/Month View](#) | [Class Day](#) | [Sports](#)

Today



**Monday, November 15**

[Special Schedule](#)

8:30am [Period 4](#)

9:45am [Period 5](#)

10:00am [Yoga class](#)

12:00pm [Sit-Down Lunch](#)

12:40pm [Period 6](#)

1:55pm [Period 7](#)

**Tuesday, November 16**

Frank L. & Helen Childs

# Boyden Library

Deerfield Academy

[How do I . . . ?](#) | [Library Home](#) | [DA Home](#) | [Moodle](#) | [NoodleBib](#) | [Contact Us](#)

## RESOURCES

- [Catalog / Other catalogs](#)
- [Electronic books](#)
- [Databases by Subject / by Title](#)
- [Periodicals & E-Journals / Other lists](#)
- [Search the Internet](#)
- [Citation Style Guides](#)
- [Research Guides](#)
- [Ready Reference](#)

## SERVICES

- [Instruction](#)
- [Interlibrary Loan](#)
- [Reference & Consultation](#)
- [Borrowing & Lending](#)
- [Course Reserves](#)
- [Computers & Equipment](#)
- [Information Technology](#)
- [Archives](#)

## ABOUT THE LIBRARY

- [Hours](#)
- [Contacts](#)
- [Virtual Tour](#)
- [Maps](#)

Select **NoodleBib**  
on library homepage

<http://library.deerfield.edu>

[Search the Boyden Library Catalog](#)

[Suggest a Purchase](#)

[Search other library catalogs](#)

[Borrow books from other libraries](#)

[Find Articles and Citations](#)

[Search Databases: by Subject | by Title | Trials](#)

[Find articles on the Internet](#)

[Get articles from other libraries](#)

[Find Periodicals](#)

[Periodicals & E-Journals](#)

[Search other periodical lists](#)

[Research Guides](#)

## What's New?

- [Thirsty? Try our Hydration Station](#)
- [Daily Source \(top news\)](#)
- [World Economics \(from Newsbank\)](#)
- [Forms & documents](#)

## REGULAR HOURS

Mon. - Thurs.  
7:45 am - 9:45 pm  
Fri.  
7:45 am - 5 pm  
Sat.  
9:00 am - 4:30 pm  
Sun.  
12:00 pm - 9:45 pm



Frank L. & Helen Childs

# Boyden Library

Deerfield Academy

[How do I . . . ?](#) | [Library Home](#) | [DA Home](#) | [Moodle](#) | [NoodleBib](#) | [Contact Us](#)

## RESOURCES

- [Catalog / Other catalogs](#)
- [Electronic books](#)
- [Databases by Subject / by Title](#)
- [Periodicals & E-Journals / Other lists](#)
- [Search the Internet](#)
- [Citation Style Guides](#)
- [Research Guides](#)
- [Writing Guides](#)
- [Ready Reference](#)
- [Research Tutorials](#)

## SERVICES

- [Instruction](#)
- [Interlibrary Loan](#)
- [Reference & Consultation](#)
- [Borrowing & Lending](#)
- [Course Reserves](#)
- [Computers & Equipment](#)
- [Information Technology](#)
- [Archives](#)

## ABOUT THE LIBRARY

- [Hours](#)
- [Contacts](#)
- [Virtual Tour](#)
- [Maps](#)
- [Policies](#)
- [Our Donors](#)

Login with your network username and password for access to the library's electronic resources.



Username:

Password:

Please note that in some cases, music and video will not work through this proxy service.

## Good News!

You will be able to access your Boyden Library NoodleBib Account from anywhere in the world!

When you select the Boyden Library's NoodleBib from an offsite location, you will be prompted to enter your Deerfield Academy Username and Password.

Very Important to register for your NoodleTools Account from our Boyden Library Homepage

<http://library.deerfield.edu>

## Register or Sign In

You have been automatically authenticated into the Deerfield Academy subscription.

You'll need your own **Personal ID** so that the NoodleTools system can keep your work separate from the other users at your school or library.

Create a Personal ID

**BOYDEN LIBRARY**

### Already Have a Personal ID?

If you are a returning user, enter your Personal ID and password to sign in to your NoodleTools account. If you are a new user, you should [choose a Personal ID](#) now.

Personal ID:

Password:

[I forgot my password](#)

Remember me (this is my personal computer)

Sign In

Your Boyden Library NoodleTools Account includes:

• Access to online note cards

• Ability to share your research projects with teachers

The free online NoodleTools website does not include these features

### Access

- ▶ [Sign In](#)
- ▶ **New User Registration**
- ▶ [Retrieve Lost Password](#)
- ▶ [Account Administration](#)
- ▶ [Help](#)

## New User Registration

### About You

I am a **student or library patron**

I am a **teacher or librarian**

Expected year of graduation:

**Be sure to create an easy-to-remember personal ID and password that differs from your network password : )**

### Choose a Personal ID

You'll use this personal ID and password to access your saved work.

Personal ID:

Password:

Retype password:

### Easy Login Retrieval

Just in case you lose your personal ID or password, provide your first/last initials and the last 4 digits of your phone number so that we can identify your account and help you out.

Initials:  (e.g. "JS" for John Smith)

Phone:  (last 4 digits only)

**We recommend the last 4 digits of your cell phone number**



**Your Boyden Library NoodleBib Account is now activated!**

Welcome, [janet](#) | [Sign Out](#) | [My Account](#) | [Help](#)

## My Projects

[+ Create a New Project](#)

Description	Style	Level	Entries	Notes	Created (EST)	Modified (EST)	Shared?	Collaborating?
-------------	-------	-------	---------	-------	---------------	----------------	---------	----------------

Click [Create a New Project](#) to begin writing your bibliography.

*Congratulations!*

You have now created a Boyden Library NoodleBib Account!

With your new account you are now able to ...

- Create a NoodleBib Bibliography
- Share your NoodleBib Bibliography with your teacher and classmates
- And More!

